

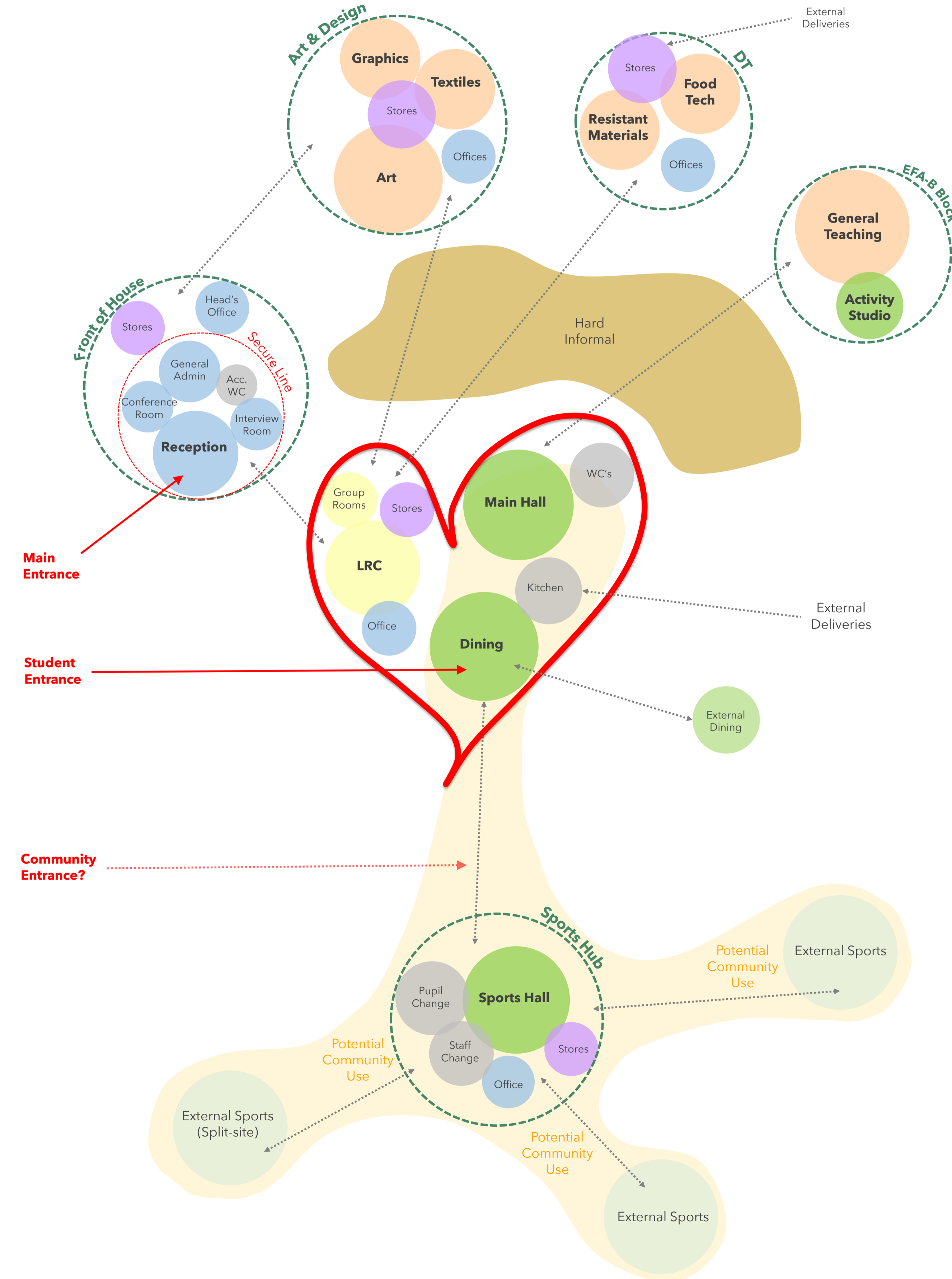


Adjacencies Strategy

The proposed project aims to provide a new heart for the school, grouping key spaces used everyday by students (such as dining hall, main hall, and library) into a central hub.

A new main entrance and reception visible from Deanstones Lane will provide a focal point for visitors, and will connect the heart spaces to a new sports hub that will allow for potential community out-of-hours use.

Specialist teaching, including Art and Design and Technology, will form a link between the new building and the retained Block B, allowing the school to operate as a single cohesive whole. An external courtyard will sit between the two buildings, creating a buffer space and the opportunity for informal learning and social experiences.

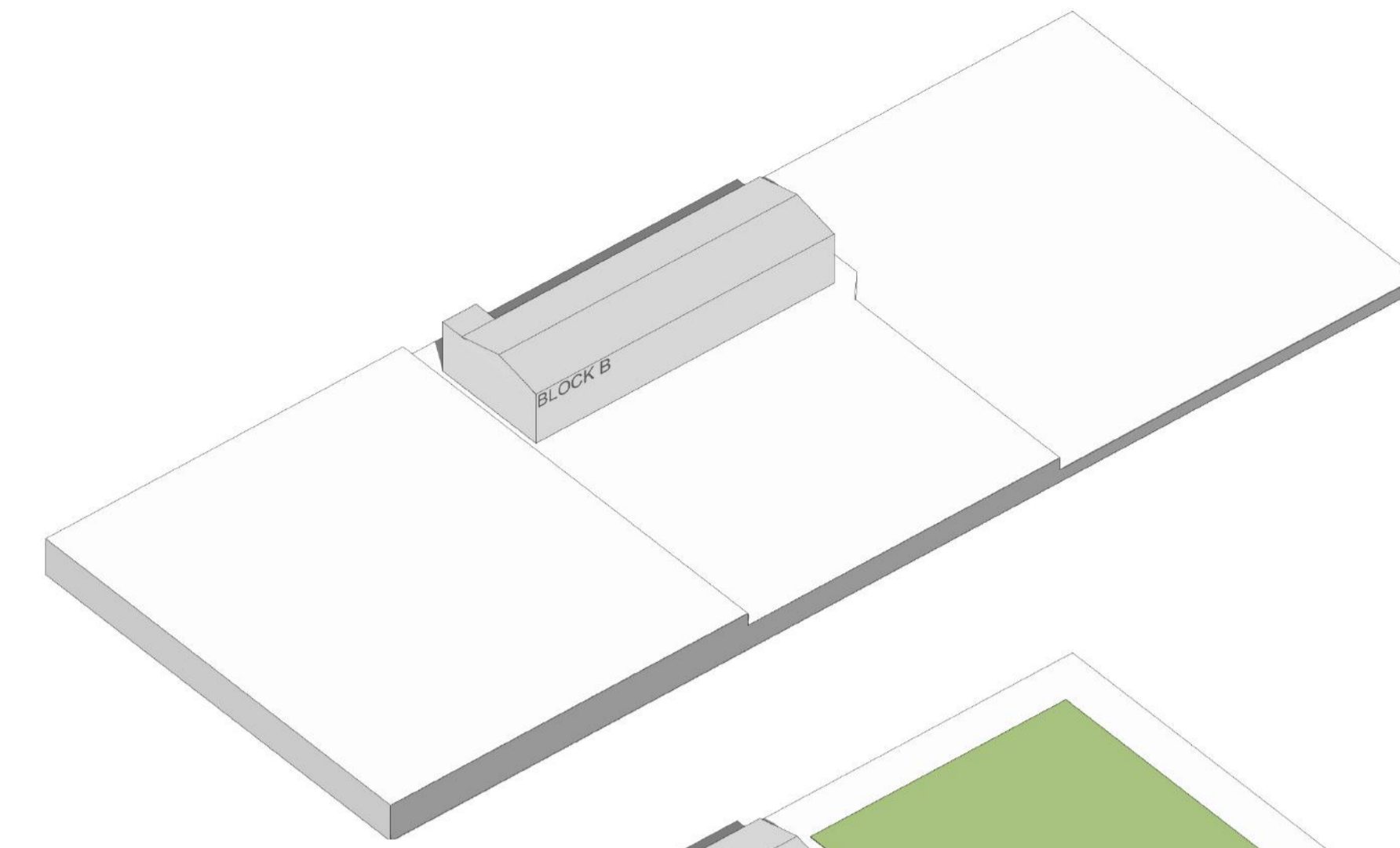


Building Development

A series of simple moves have created the shape of the proposed building:

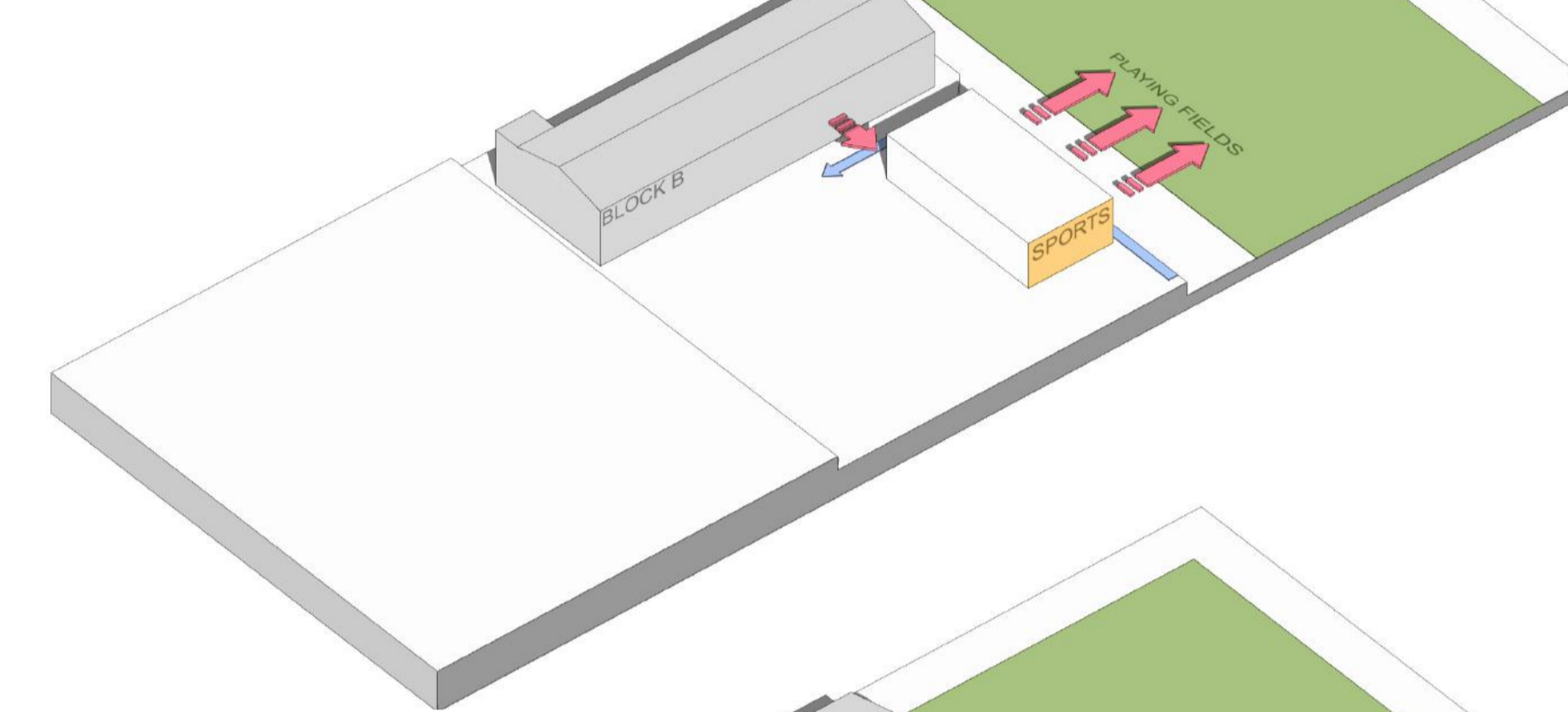
00 | Retained Block B

The existing site has been considered as three distinct levels approximately 2m apart in height. The retained Block B sits at the eastern edge of the middle level, with Block A (to be demolished) on the level above and sports pitches on the level below.



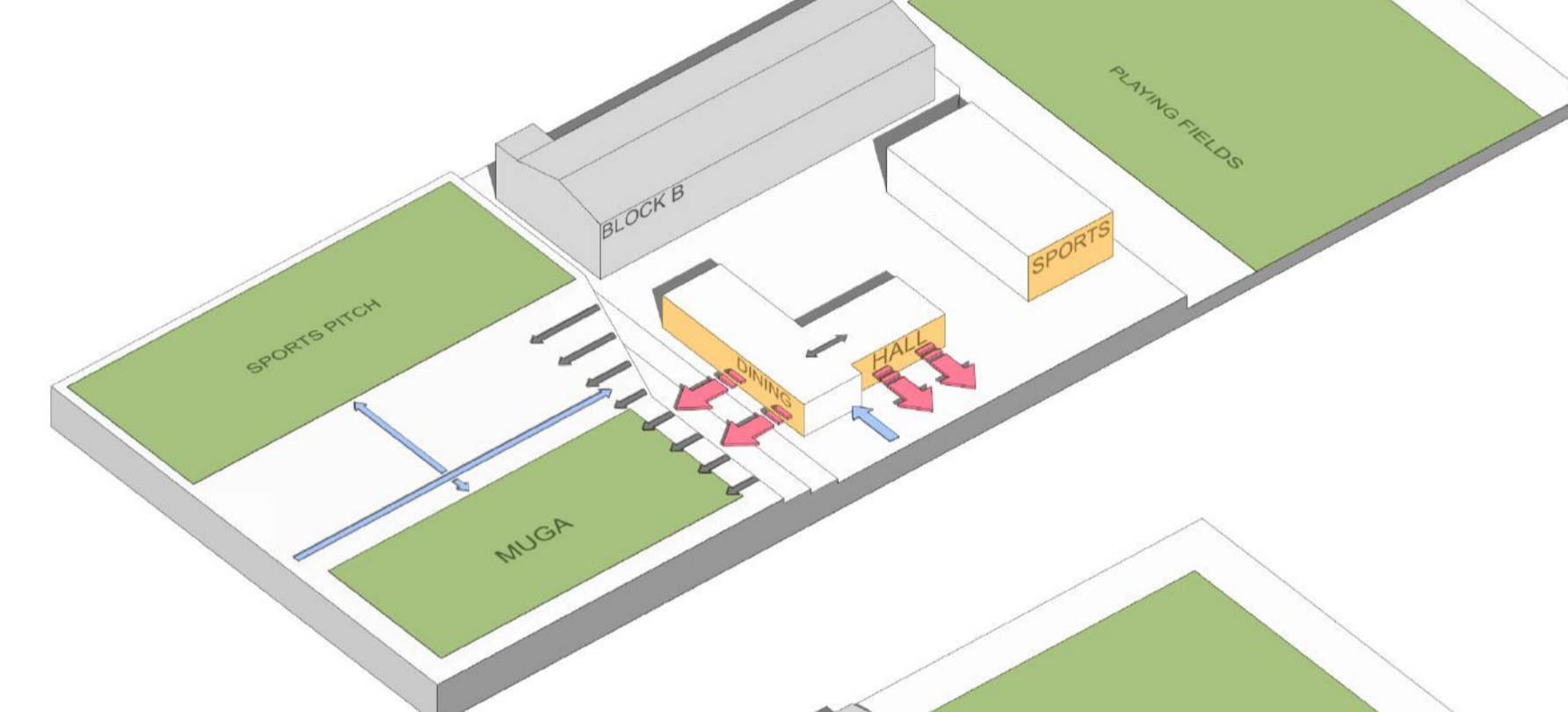
01 | Sports Provision

The new sports hall is located at the southern edge of the middle level, providing direct access to the existing sports pitches. It is placed adjacent to Block B, but with a gap to allow movement between the two buildings.



02 | Halls & Dining

The main hall is located at the front of the site facing Deanstones Lane to showcase the school. The dining hall faces the upper level to provide privacy for students, whilst the edge of the upper level has been cut back to create a sheltered external area and allow in daylight.



03 | Main Entrance & Arrival

The Main Entrance sits between the sports hall and main hall, creating a link that improves community accessibility. The entrance has been pushed back into the building to create a sheltered arrival space that directs visitors towards the main doors.



04 | Connection to Existing

Teaching spaces connect the new building to the retained Block B. Student access between the two buildings is across a sheltered courtyard. A dedicated student entrance directly into the dining hall is created facing the reopened access from Russell Hall Park.

