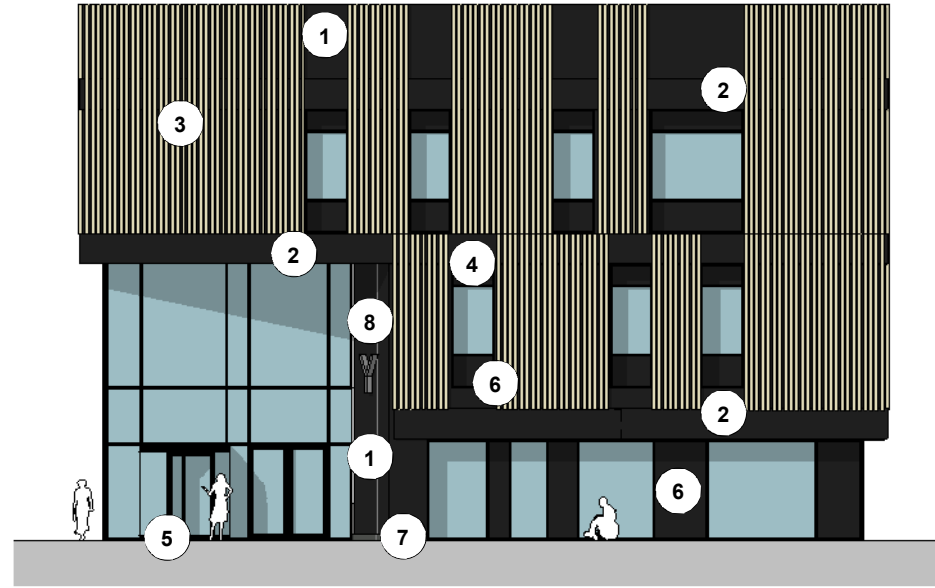
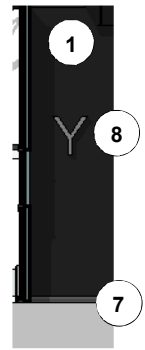




1. NORTH ELEVATION
1 : 200

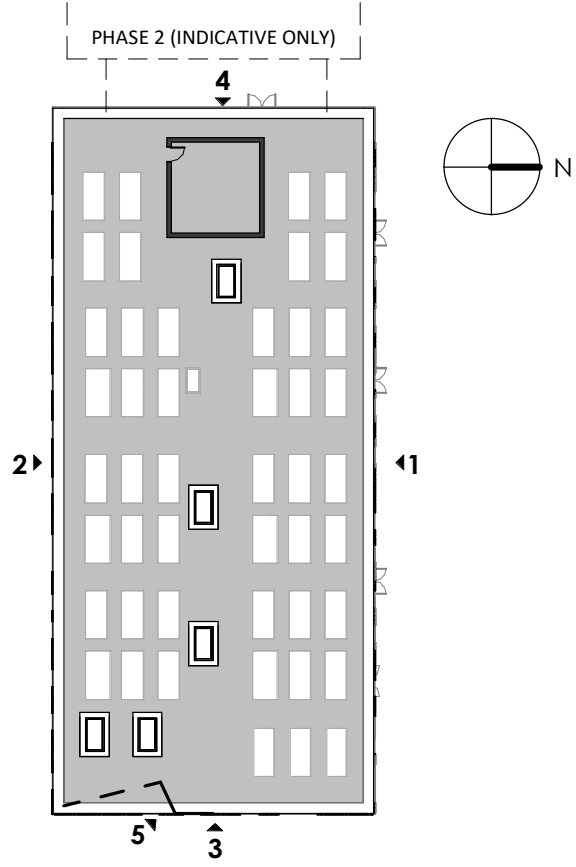


3. EAST ELEVATION
1 : 200



5. East Entrance
1 : 200

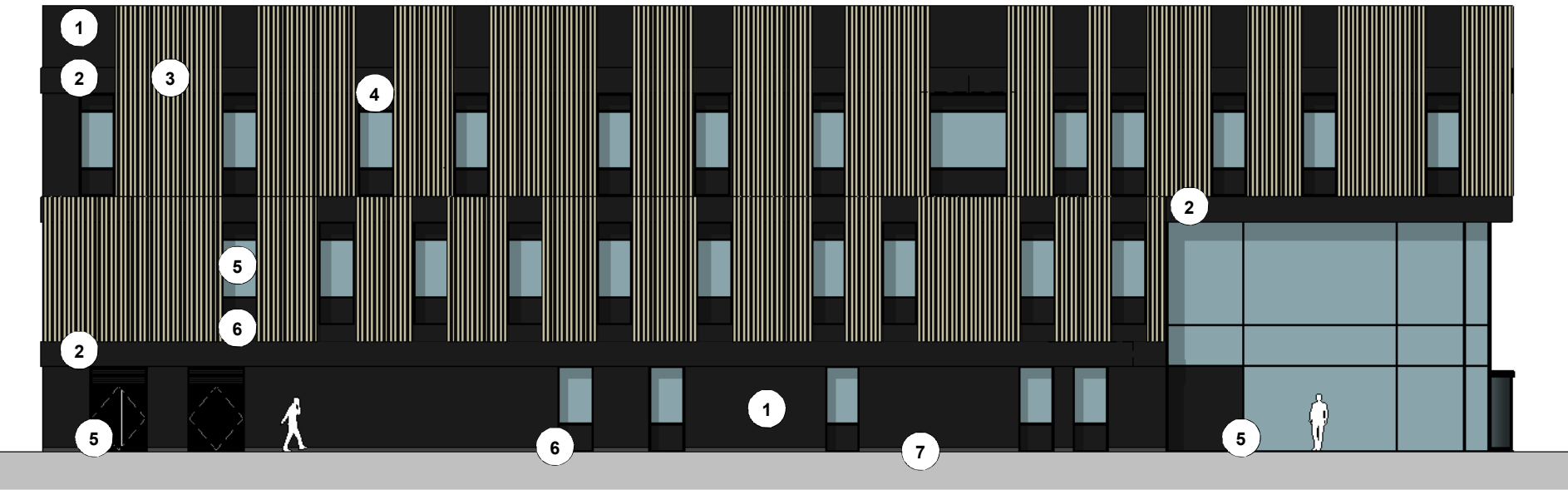
KEY



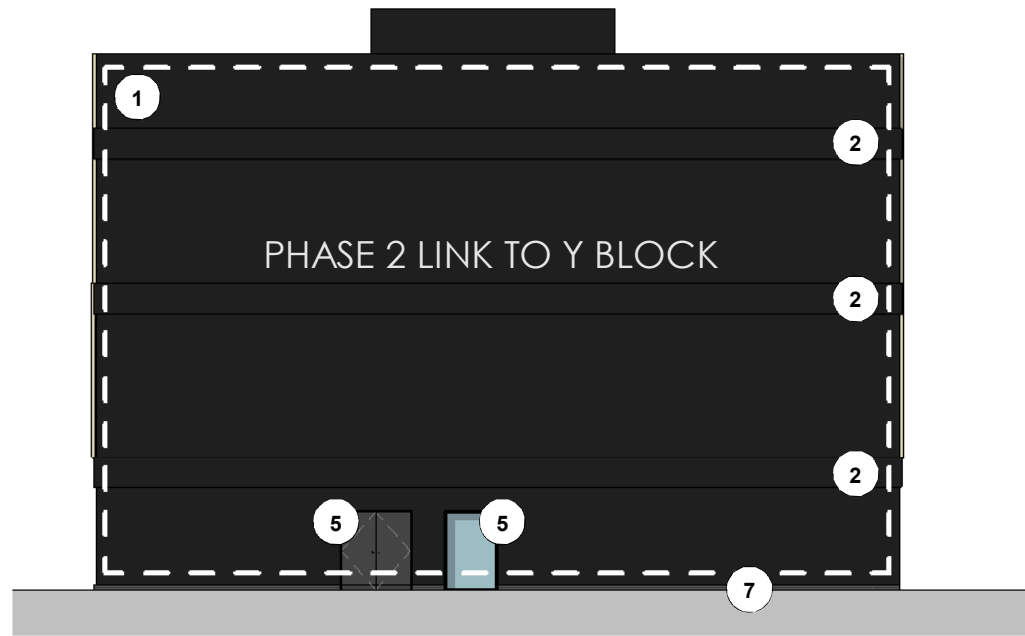
- 1. BLACK CLADDING PANEL.
- 2. BLACK METAL C SECTION FOR FIXING BATONS
- 3. VERTICAL BATONS - CHAMPAGNE COLOUR TBC
- 4. LOUVRES TBC - INTENTION TO INTEGRATE AT THE TOP OF WINDOWS
- 5. PPC ALUMINIUM FRAMED WINDOW/CURTAIN WALL/DOOR/LOUVRES/REVOLVING DOOR - BLACK TBC
- 6. SPANDREL PANELS - BLACK TBC
- 7. BRICK PLINTH - BLACK TBC
- 8. SIGNAGE - INDICATIVE ONLY TBC

NOTE: FINAL MATERIALS & COLOURS ARE TO BE CONFIRMED. WINDOW TRANSOM, MULLION AND LOUVRE CONFIGURATIONS ARE TO BE DEVELOPED ALONGSIDE M&E REQUIREMENT AND SUBJECT TO CHANGE.

RWP - ARE INTERNAL - LOCATIONS TBC.



2. SOUTH ELEVATION
1 : 200



4. WEST ELEVATION
1 : 200

PL	PL01	06/12/2024	PAC SUBMISSION
S4	P15	07/10/2024	Stage 2 amendments design freeze - Issued for costing
S3	P09	17/05/2024	First Issue
STATUS	REV	DATE	DESCRIPTION
CLIENT	COLLEG Gwent		
CONSULTANT	STRIDE TREGLOWN		
PROJECT	CROSSKEYS PHASE 1		
ORIGINATOR NO	155663		

CONSULTANT
STRIDE TREGLOWN
www.stride-treglown.com © Stride Treglown Limited 2020

PROJECT
CROSSKEYS PHASE 1
Crosskeys Campus

DRAWING TITLE
ELEVATIONS

SUITABILITY STATUS
PL : Planning Issue

DRAWING USAGE:
PROJECT - ORIGINATOR - VOLUME - LEVEL - TYPE - ROLE - CLASS - NUMBER
15663-STL-XX-ZZ-DR-A-1004

STATUS, REVISION
PL_PL01

0 5 10 m 20 m