

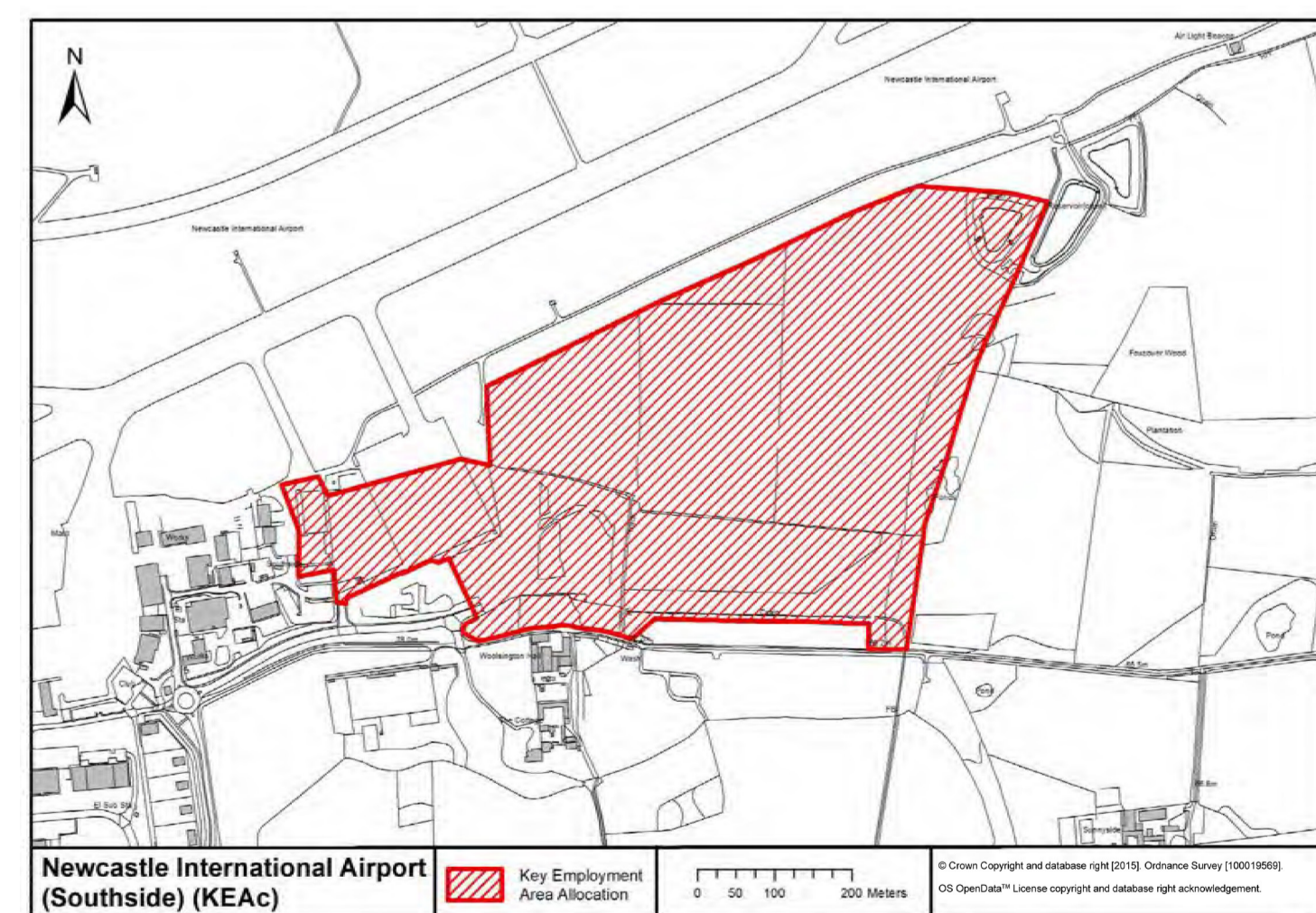
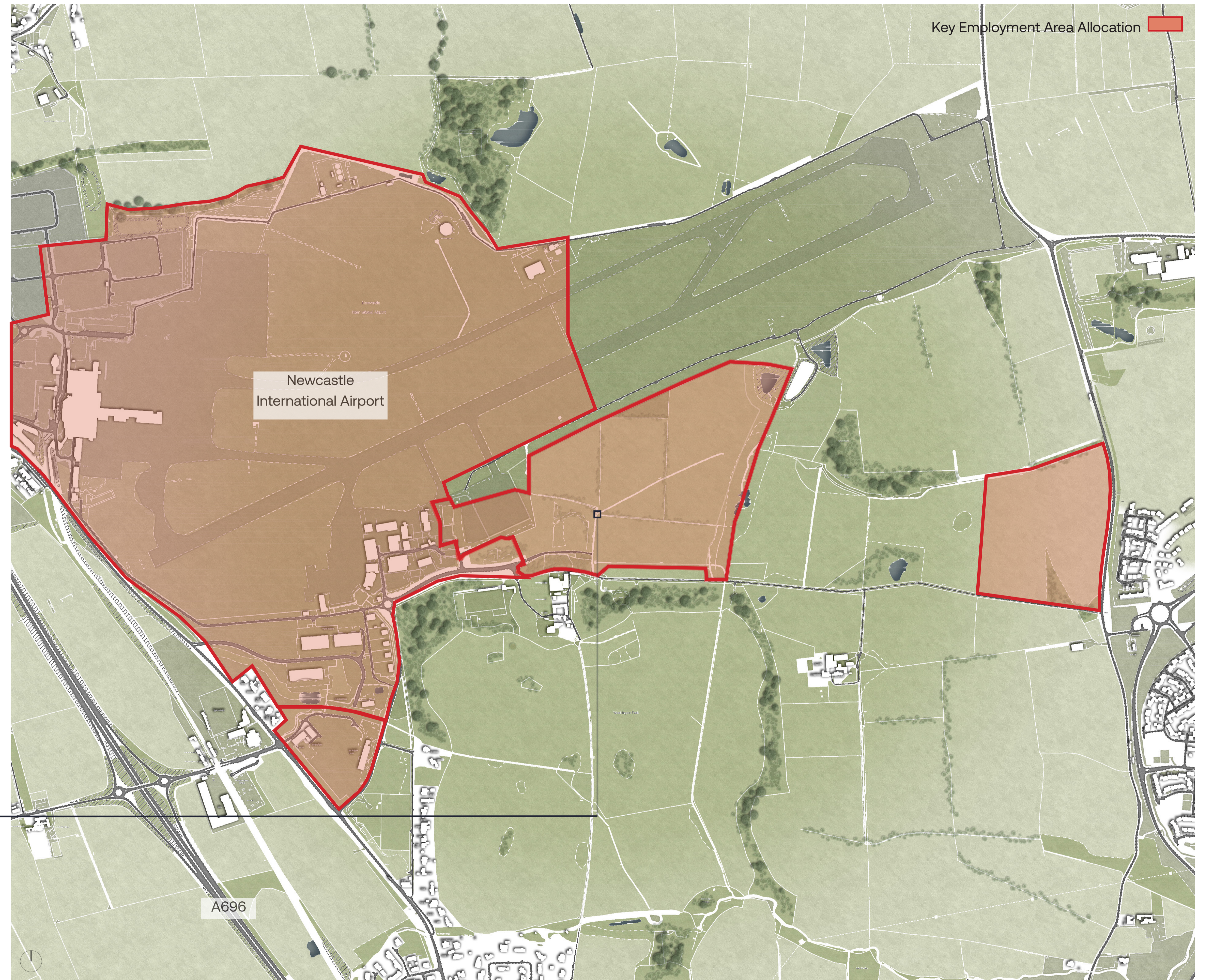
Welcome & Project Introduction

Welcome to our consultation event to provide information on the proposed development of the Airlink Site at Newcastle International Airport. The plans propose a high-quality development delivering air freight and warehousing associated with the wider Airport operations, as part of the Airport Masterplan adopted earlier in 2026. The Airport Masterplan sets out the 15-year vision for the future and development proposals to 2040 to support economic growth in the North-East region.

The Airlink development site is allocated in the adopted Newcastle Local Plan to deliver new air freight and warehousing development under Policy KEA1c. The project team are now shaping the development proposals in collaboration with the Local Authority and are targeting an Outline Planning Application submission in Spring 2026. This will allow a phased approach to development.

The project team are here today to talk to you about the proposals, please review the information available and speak to the team who are happy to answer any questions you may have.

Before we submit our planning application we welcome feedback from the community. Please share your views by filling in one of the paper feedback forms available here today or alternatively via a consultation website for the development which can be viewed via the following link <https://dppi.co.uk/airlink/> if you have friends or family who were unable to attend. The exhibition display information will be available on the consultation website after the event to review and provide comment until the 2nd March.



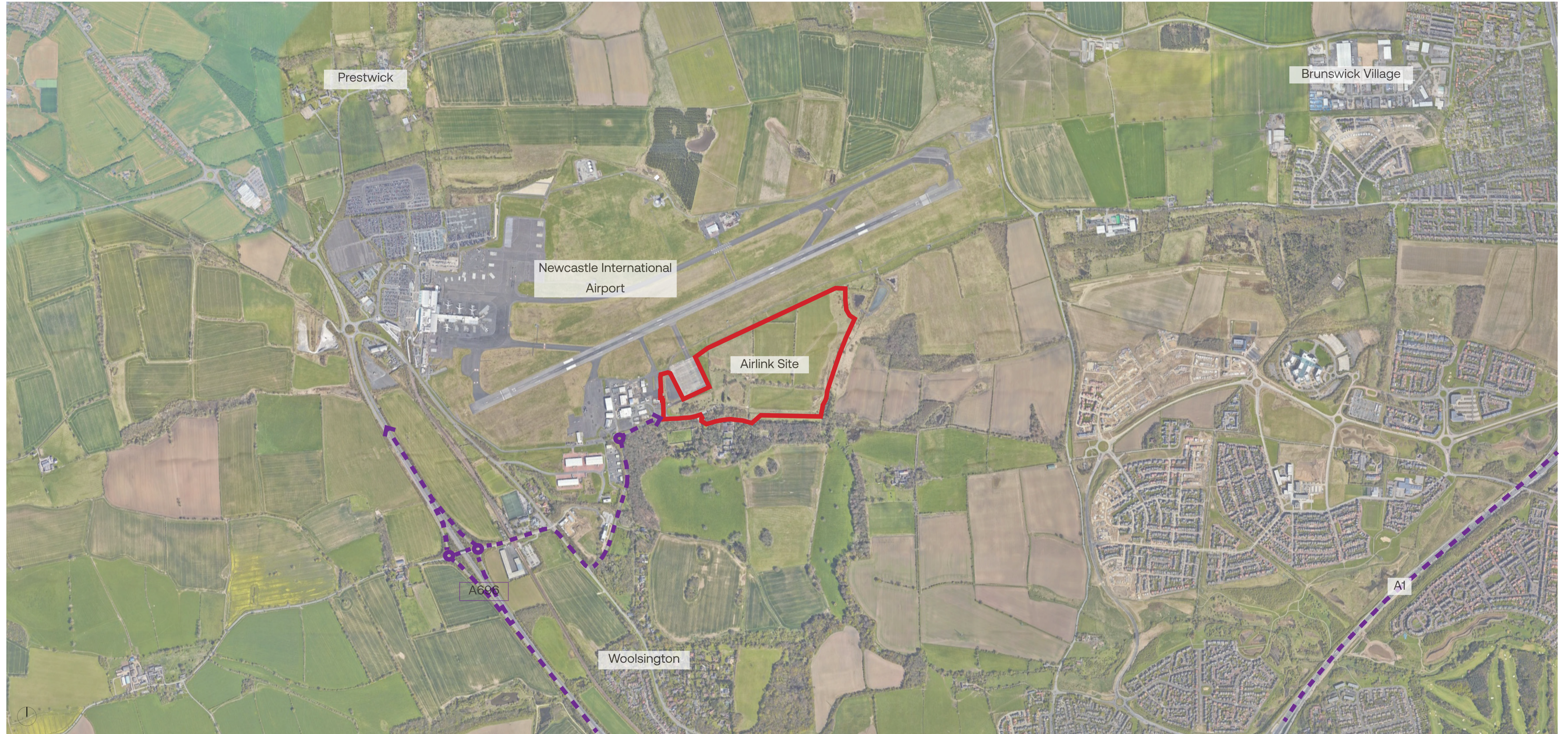
Key Employment Area Allocation, Newcastle International Airport (Southside)

Key Employment Area Allocation, Context Plan

Site Context and Access Plan

The Airlink Site is located directly south of the runway at the Airport bound by woodland with Woosington Hall and grounds beyond to the south. The site is within the Airport's ownership and forms part of the wider Airport Masterplan alongside Airview Park. The development will be accessed from the B6918 with access onto the A696. Vehicle traffic associated with the development will travel northwards and not through Woosington Village. In relation to public transport, Callerton Parkway Metro is located approximately 1km to the west of the Site with bus connections also available nearby. The Site is at low risk of flooding and survey work is ongoing for trees, drainage, ecology noise impact, air quality, lighting, highways and landscaping. These reports will be submitted as part of the planning application documentation.

Primary Access Route 



Site Access Plan

Illustrative Site Masterplan

The proposed development provides warehousing and logistics for air freight, cargo, logistics and advanced manufacturing, associated with the Airport Operations and is shown as Airlink in the Airport's Masterplan 2040. Airlink is a landmark development that will create high-quality jobs, generate millions for the local economy and unlock new opportunities for businesses showcasing the North East's vast potential on a global stage and reinforce its status as a prime destination for investment, further strengthening the region as a major hub for international trade and economic growth. Once built, Airlink will generate numerous employment opportunities. The development is set to play a crucial role in supporting the Airport's growing cargo operations and has been designed in accordance with the Airport's Net Zero 2025 Strategy.



Illustrative Masterplan



Site Context Plan

Landscape and Ecology



Footpaths



External Landscape and Seating



Habitat Creation



Retained Woodland/Existing Trees



Proposed Attenuation Basins



Illustrative Landscape Scheme

Building Design



Building Frontage
Create an attractive and functional development with identity, which relates well within its context.



Green Outdoor Space
Consider the built form, landscape and communal spaces to ensure a high quality, holistic approach.



Office Frontage
Well-designed, with attention to detail and provide clear legibility in the choice of façade material specifications.



Curved Roof Profile
Utilise modern design methods and materials, to ensure the best possible outcomes.



Cycle Storage Provision
Establish connectivity by maximising opportunities for new connections to the site.



Illustrative Masterplan

Newcastle Airport Masterplan 2040

